

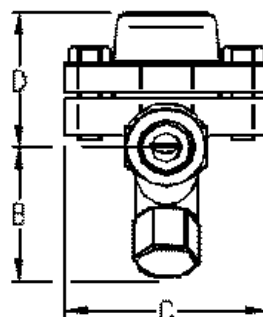
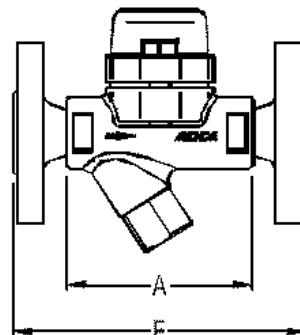
LAUHTEENPOISTIMET

TERMOSTAATTINEN LAUHTEENPOISTIN

TH 32 Y PN 40

Materiaali valuteräs C 22.8
 Paine-erolle Δp 22 bar
 käyttöarvot maksimi 22 bar
 maksimi 250 °C

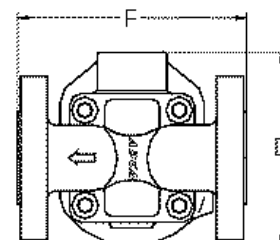
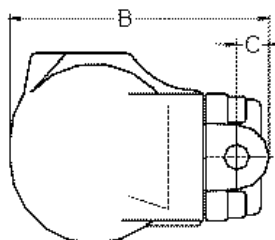
| Mitat (mm) | Laipalliset | | | kierteelliset | | |
|------------|-------------|-----|-----|---------------|-------|-----|
| | 15 | 20 | 25 | 1/2 " | 3/4 " | 1 " |
| E / A | 150 | 150 | 160 | 95 | | |
| B | 65 | 65 | 65 | 65 | | |
| C | 95 | 95 | 95 | 95 | | |
| D | 65 | 65 | 65 | 65 | | |
| massa (kg) | 3,2 | 3,3 | 4,7 | 1,6 | | |



UIMURILAUHTEENPOISTIN

FLT 17 PN 16

Materiaali valurauta GG-25
 käyttöarvot 14 bar 198 °C
 Paine-erot 4,5 bar
 10 bar
 14 bar



| Mitat (mm) | Laipalliset | | | kierteelliset | | |
|------------|-------------|-----|-----|---------------|-------|-----|
| | 15 | 20 | 25 | 1/2 " | 3/4 " | 1 " |
| F / A | 150 | 150 | 160 | 95 | | |
| B | 178 | 178 | 178 | 178 | | |
| C | 23 | 23 | 23 | 23 | | |
| D | 128 | 128 | 128 | 128 | | |
| massa (kg) | 6,7 | 7,2 | 7,7 | 5,2 | | |

